



Parties at Infinite Air!

Jump Parties

·Wednesday to Friday from 3.30pm (during the school term only)

·1 hour jump & 40 minutes in party room

·Minimum of 8 children

·£14.95 per child

·Trampoline Park Only

·Must be aged 6 or over.



·Food option 1 – Hotdogs/burgers (served with sharing nachos)

·Food option 2 – Sharing pizzas (served with sharing nachos)

Combo Jump Parties

·11am – 3.30pm Saturday & Sunday (and school holidays)

·1 hour jump & 40 minutes in party room

·Minimum of 8 children

·£18.95 per child (£13.95 for adult if required)

·Trampolines & inflatables

·Must be aged 6 or over

·Food option 1 – Hotdogs/burgers (served with sharing nachos)

·Food option 2 – Sharing pizzas (served with sharing nachos)





Parties at Infinite Air!

Infinite Tots Soft Play Party

- 4pm Wednesday to Friday (during the school term only).
- 12.15pm & 3.15pm Saturday & Sunday (and school holidays).
- 1 hour jump & 40 minutes in party room
 - Minimum of 8 children
 - £12.95 per child
 - Must be under 6 years
- Food option 1 – Junior hotdogs (served with quavers)
- Food option 2 – Sharing pizzas (served with quavers)



Family Jump Party

- 10am Saturday & Sunday (and school holidays)
- 1 hour jump & 40 minutes in party room
 - Minimum of 8 children
 - £14.95 per child & £8.45 per adult
 - Mixed age group session – restrictions apply
- Must add 1 supervising adult per 3 children under the age of 6 to booking.
- Food option 1 – Junior hotdogs (served with sharing nachos)
- Food option 2 – Sharing pizzas (served with sharing nachos)





Parties at Infinite Air!

Extras

- Parties can add pepperoni topping to pizzas. Charges apply.
- Parties can also add ice cream to their order: -
 - £3 for 1 scoop tub
- Available flavours: vanilla, chocolate, strawberry, mint & bubblegum
- All ice creams are served with a wafer

Information

Please be advised that due to the pizzas being larger sharing pizzas, we are unable to mix and match the two food options. You would need to choose either option 1 or option 2.

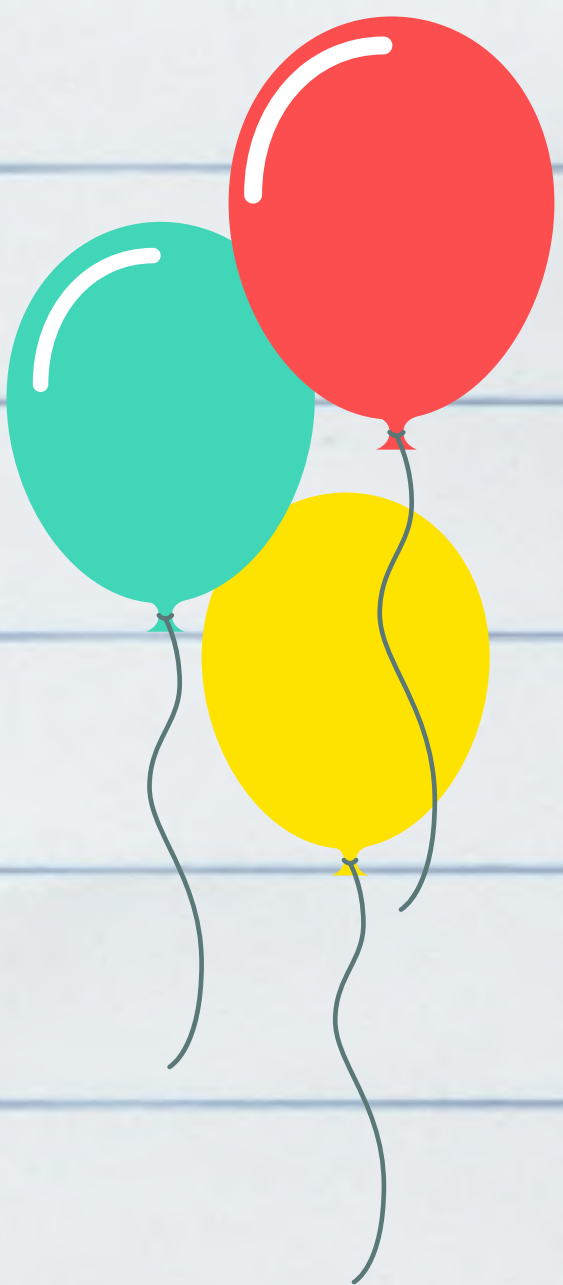
Trampoline socks included in price. Refillable jugs of juice included in price.





Parties at Infinite Air!

**Please complete waivers before
arrival at www.infiniteair.co.uk**





Parties at Infinite Air!

Arrival

Please arrive at least 30 minutes before the start of the reserved session so as not to lose valuable time at registration, safety briefing etc.

Waiver

Please ensure you and your party have completed your waiver(s) before visiting our site. To do this please visit our website www.infiniteair.co.uk

Trampoline Party

When your party arrives, you'll be checked in at the front desk, where we check that all participants have valid waivers. Your party will be given grip socks (excluding Soft Play Only parties) & party wristbands and the party organisers will then be shown to their allocated party room to set up if needed. Generally, we advise all party guests to wait in the main reception area. The session lasts for 1 hour. Participants will then be advised by our park staff that their session is over, and they should make their way to their allocated party room, where they will be served their food. Parties should remain in their party room for the remaining 40 minutes. We do not provide cake, balloons, decorations or party bags, please feel free to bring them with you. We ask that banners are stuck to the wall using blue tack only. We also ask that you do not bring any confetti/party poppers (this includes balloons with confetti in them). Plates & cups are provided by us, but if you choose to bring your own, please let us know when you arrive



Parties at Infinite Air!

Safety Briefing

We complete a safety briefing 5 minutes before the session start time, every participant must attend the briefing. If any of the party guests are late, we will brief them as they arrive but please be aware that this may affect their session time. This briefing does not apply to Soft Play Only parties.

Car Parking

Please be aware that due to training and tournaments at our football stadium, the car park can become very congested. Arriving 30 minutes before your party is due to start can help reduce any impact parking issues may have on the party. The carpark directly outside of Infinite Air is free to use. Please be aware that parking wardens do patrol the area and will issue tickets to any cars obstructing the public walkway. During busy periods you can park at Belmont Car Park, which is an independently run facility located at the top of the driveway. Infinite Air are not responsible for any charges or fines from Belmont Car Park.

Changes & Cancellations

Please note that changes/cancellations can be made free of charge up to 48 hours before the booking date. Additional guests can be added to a booking if there is availability. Especially on weekends, holidays and school holidays, our park fills up quickly. In case of doubt, as a precaution book for a few more guests. If you do have any last-minute changes to the numbers, please inform the reception desk and we can advise the best course of action.



Parties at Infinite Air!

Information

Allergens list available upon request. Please note that a surcharge for allergen alternatives will apply. Please be aware that while our food products may be marketed as free of allergens at point of production, we cannot guarantee that this food is free from contaminants when served. The company cannot be held liable for any allergens present in external food brought into the building e.g. birthday cakes.